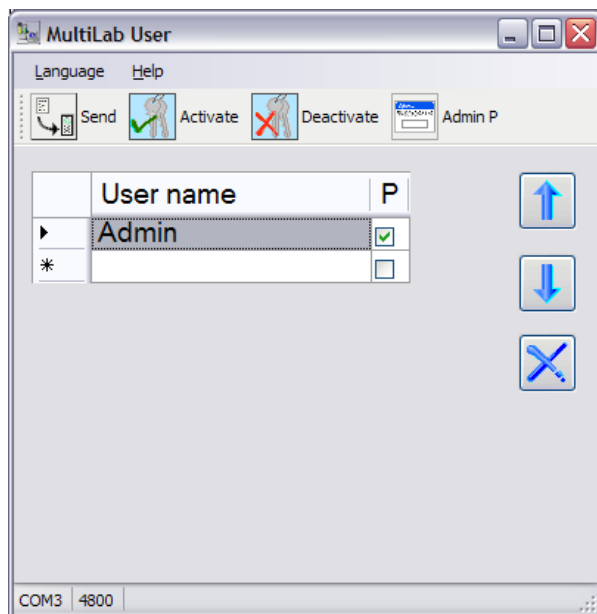


MultiLab User



PC software
for user administration

MultiLab User - Contents

1	Overview	3
2	Installation	3
2.1	System requirements	3
2.2	Installing the <i>MultiLab User</i> program on the PC	4
2.3	Connecting the meter with the PC	4
3	Operation	4
3.1	Activating the user administration on the meter	4
3.2	User administration	7
4	What to do if....	8
4.1	No connection to meter	8
4.2	User administration cannot be set up	8
4.3	Forgotten the password?	8

1 Overview

The *MultiLab User* PC program adds the user administration function to the features of your meter.

After activation of the user administration by the administrator, measurements are only possible after login with a user name. The user name is documented with the measured values and in records.

The user administration is swapped out to the PC.

The following functions are available to the administrator:

- Creating / Erasing user accounts
- Establishing access protection through a password
- Activating / Deactivating the user administration on the meter

The meter can manage up to 50 users.

2 Installation

2.1 System requirements

2.1.1 System requirements - PC

- AT-compatible computer with Pentium processor or higher
- Free USB port on the PC or a USB hub
- Operating system Microsoft Windows 2000, Windows Server 2003, Windows XP, Windows Vista or Windows 7.

2.1.2 Requirements - meter

To be able to establish and work with the user administration on your meter, you need the following:

- A suitable meter
 - e.g. of the MultiLine 34x0 series
- The current firmware version in the meter
 - For meters of the MultiLine 34x0 series:
Firmware version \geq 2.10

**NOTE:**

You can read out the firmware version of your meter (see operating manual of your meter).

The current firmware version for your meter is available on the Internet under www.wtw.de.

The instructions for the firmware update are available in the operating manual of your meter.

The current operating manual for your meter is available on the Internet under www.wtw.de.

2.2 Installing the *MultiLab User* program on the PC

The *MultiLab User* program is on the CD-Rom included in the scope of delivery of your meter or is available on the Internet under www.wtw.de.

1. Unpack the installation program, `Install_MultiLabUser_Vx-xx.zip` and start the executable file.
2. Follow the user guide.
The program is installed.

2.3 Connecting the meter with the PC

A USB cable is required for this connection (type A - type B).

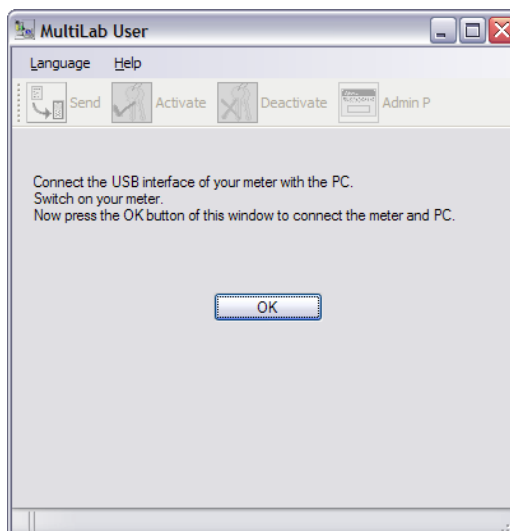
The *MultiLab User* program recognizes the suitable meters.

1. Connect the meter to the PC with a USB cable.
2. Switch on the meter.

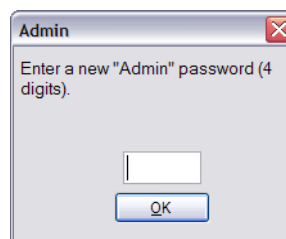
3 Operation

3.1 Activating the user administration on the meter

1. Connect the meter to the PC.
2. Switch on the meter.
The meter displays the start window. A measured value is displayed if a sensor is connected.
3. Start the *MultiLab User* program from the start menu.
The *MultiLab User* window appears.



4. If necessary, select a different language in the *Language* menu.
5. If necessary, open the operating manual for the software in the *Help* menu.
6. Start searching for the connected meter with *OK*.
As soon as a meter is recognized, you are prompted to enter an administrator password.



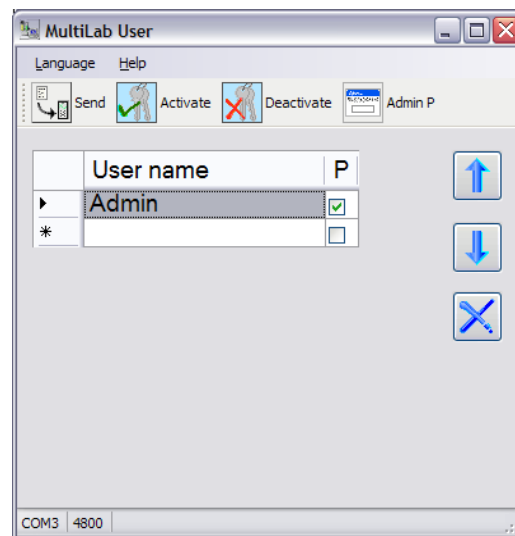
- A password consists of 4 digits.
7. Enter the password and confirm with *OK*.
The password is displayed hidden.
The list of users is read out from the meter and displayed on the PC.

NOTE:

If you use the *MultiLab User* program for the first time:



- Enter a new password here.
This password is assigned to the user name, Admin P. It enables access to the meter with the user name Admin P and access to the user administration on the PC.
- Confirm with OK.
A window for the password repetition pops up.
- Enter the password once again and confirm with OK.
The query, *Create a new list of users in the meter? An existing list in the meter is removed!* pops up.
- Confirm with OK.
The list of users is created on the meter and displayed on the PC.
The list includes the user name, Admin P and the password entered.



8. Edit the user list (see 3.2 User administration, page 7).
9. Send the list of users to the meter with *Send*.
A progress bar is displayed while the data are being transmitted. The meter will then restart.
10. Activate the user administration in the meter with *Activate*.
A progress bar is displayed while the data are being transmitted. The meter will then restart. The *Login* menu is displayed.
Before you can measure with the meter, first select a user name and enter a password as necessary.

3.2 User administration

1 Send the displayed list of user with the setting for the password (*P*) to the meter (*Send*)
The list of users is sent to the meter.

2 Activate the user administration on the meter.

3 Deactivate the user administration on the meter.

4 Change the password for the user name, Administrator.

5 Create a new user.
Enter a user name at the end of the list (empty box, 15 characters max.).

6 Activate the use of a password for a user name.
The user determines the password while logging in with the user name for the first time. The administrator does not know the password.

7 Change the order of user names in the list.
Use the arrow keys to change the position of the highlighted user name within the list.

8 Erase a user name.
The highlighted user name is erased.

4 What to do if...

4.1 No connection to meter

Cause	Remedy
USB cable defective	Use another USB cable
Baud set on the meter is too high	<ul style="list-style-type: none"> • Set lower baud rate on the meter (menu, System/interface) • Quit the setting menu • Restart the <i>MultiLab User</i> program. • Re-establish the connection

4.2 User administration cannot be set up

Cause	Remedy
The firmware version of the meter does not support this feature	<ul style="list-style-type: none"> • Carry out a firmware update (see operating manual of your meter)

4.3 Forgotten the password?

Cause	Remedy
Password for a user name forgotten	<ul style="list-style-type: none"> • Erase the user name • Re-enter the user name • Send the list <p>The user can assign a new password with the next login.</p>
Administrator password forgotten	Contact the service department.



Wissenschaftlich-Technische Werkstätten GmbH

Dr.-Karl-Slevogt-Straße 1
D-82362 Weilheim

Germany

Tel: +49 (0) 881 183-0
+49 (0) 881 183-100
Fax: +49 (0) 881 183-420
E-Mail: Info@WTW.com
Internet: <http://www.WTW.com>