

# WTW MultiLab<sup>®</sup> Importer

**Add-In for Microsoft<sup>®</sup> Excel<sup>®</sup> for data import  
from WTW meters**



**Note**

The latest version of the present operating manual can be found on the Internet under [www.WTW.com](http://www.WTW.com).

**Copyright**

© Weilheim 2010, WTW GmbH Reproduction in whole - or even in part - is prohibited without the express written permission of WTW GmbH, Weilheim.  
Printed in Germany.

## 1 Overview

The WTW MultiLab® Importer program is an add-in for Microsoft Excel that is used to transfer data from WTW meters to an open Excel spreadsheet.

The WTW MultiLab® Importer supports all WTW meters of the Lab and Field Instrumentation program that have a USB interface for data output.

The following data can be transmitted:

- The current measurement data of all connected sensors
- Manual storage (complete contents)
- Automatic storage (complete contents)
- Calibration record
- Calibration memory.

## 2 Installing the WTW MultiLab® Importer

### 2.1 PC requirements

The WTW MultiLab® Importer PC program requires the following system components:

#### Hardware requirements

- CD-ROM drive for installation
- Free USB interface

#### Software requirements

- Microsoft Excel, Version 2003 or higher

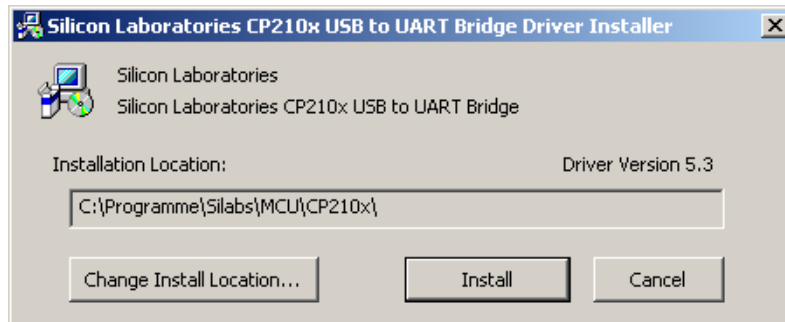
### 2.2 Installation routine

The following files and/or directories are on the supplied CD-ROM:

- A directory with the installation program for the driver of the USB interface
- The installation file for the WTW MultiLab® Importer program
- A folder with the operating manual for the WTW MultiLab® Importer program.

### Installing the driver of the USB interface

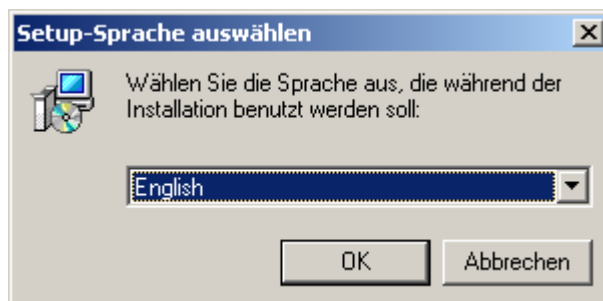
- |   |  |
|---|--|
| 1 | Insert the CD-ROM in the corresponding disk drive of the PC.       |
| 2 | Open the directory, <i>USB_VCP_driver</i> .                        |
| 3 | Execute the file, <i>CP210xVCPInstaller</i> , with a double click. |



- |   |  |
|---|--|
| 4 | Follow the user guidance (click <i>Install</i> ).  |
| 5 | Confirm the installation with <i>OK</i> . A virtual COM Port has been created with the installation. |

### Installing the WTW MultiLab® Importer

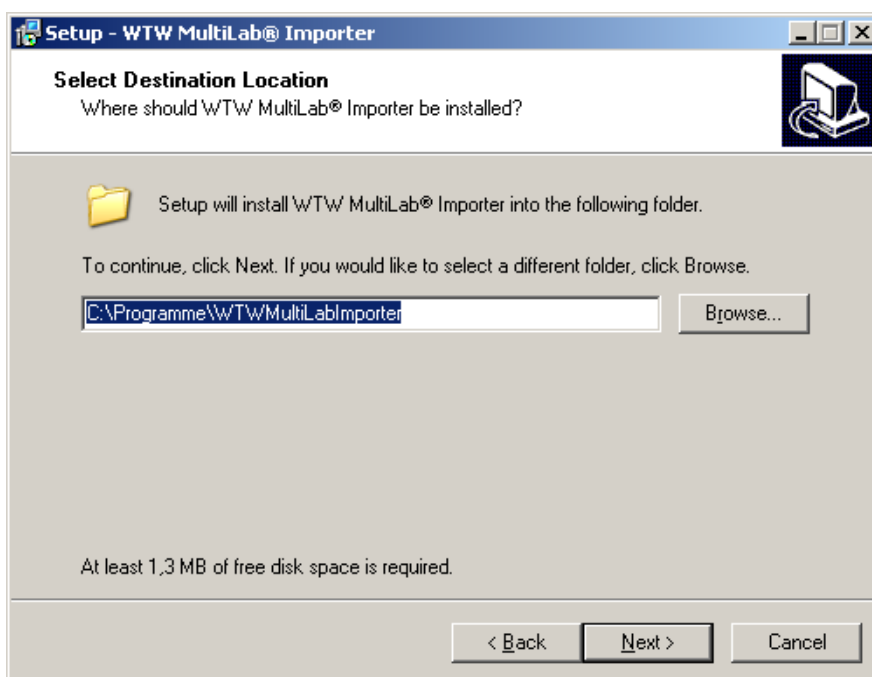
- |   |   |
|---|---|
| 6 | Execute the <i>WTWMultiLabImporter_Setup.exe</i> file with a double click (xxxx = current version number). The language selection for the installation routine appears. |
|---|---|



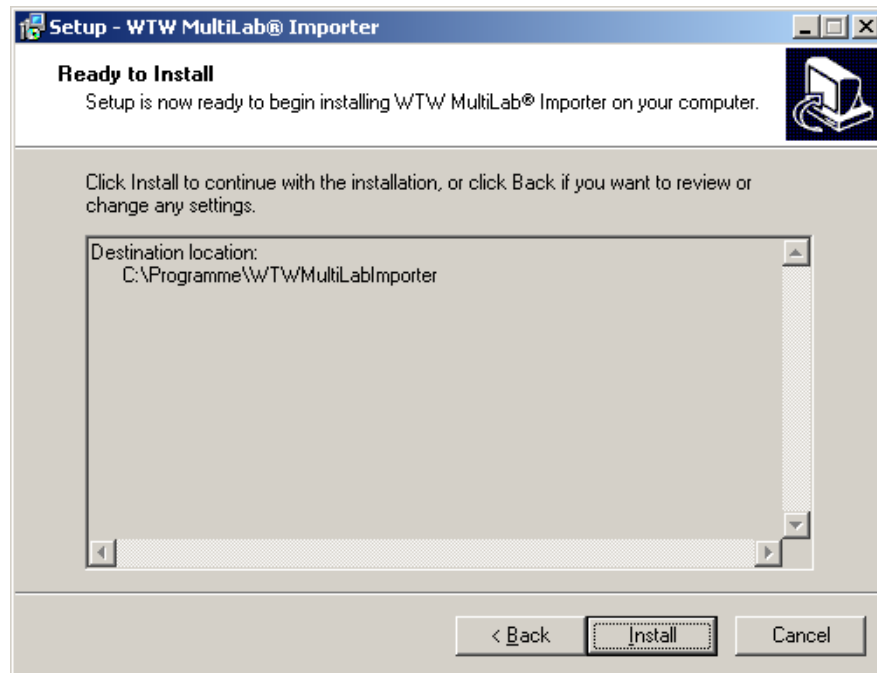
- |   |  |
|---|--|
| 7 | Select the language and press <i>OK</i> . The installation wizard appears. |
|---|--|



8 | Click *Next*.



9 | Here you change the location where the PC program should be stored (click *Browse...* ).  
When the required location is displayed, click *Next*.



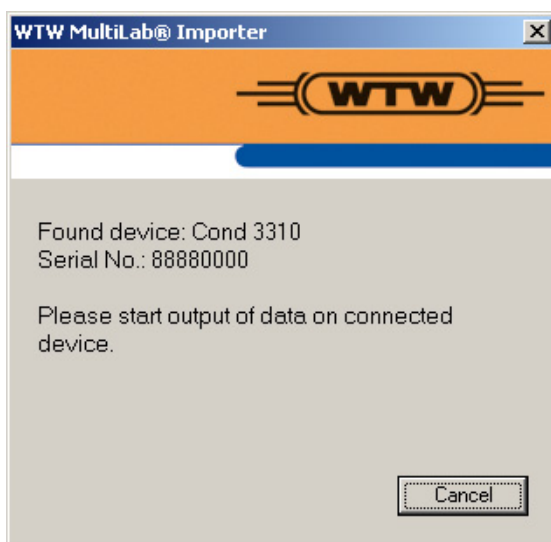
10 Here you find information on the installation. Click *Install*.



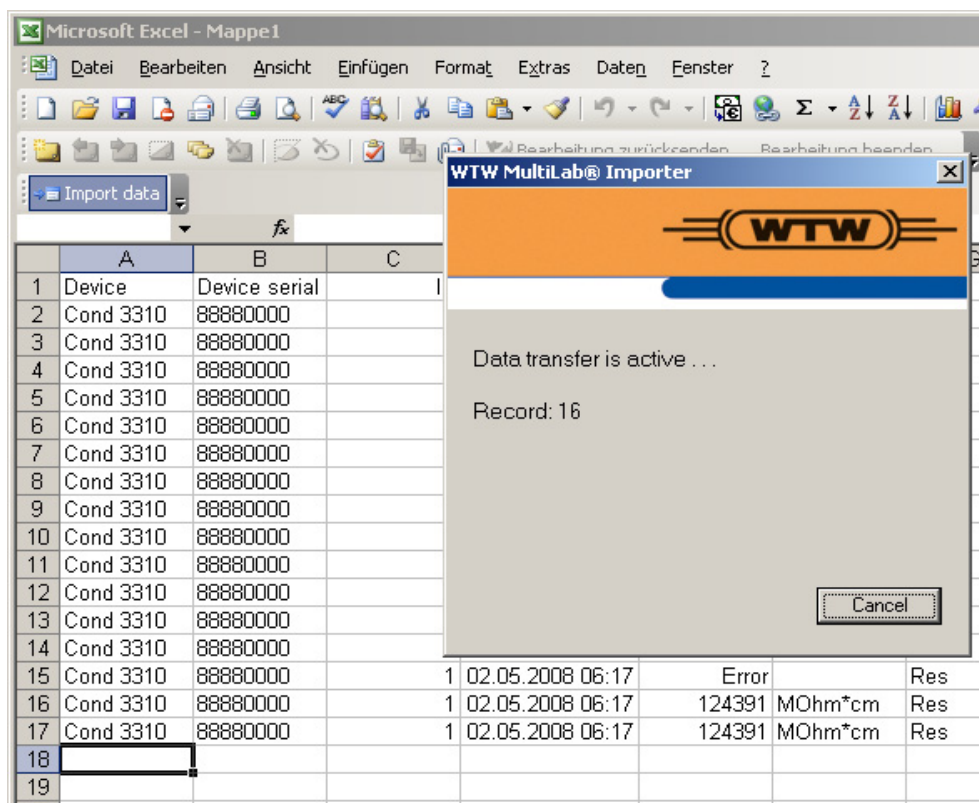
11 Click *Finish* to complete the installation. After the installation is completed, a new tool bar named "Import measured values" appears in Excel.

### 3 Working with WTW MultiLab® Importer

1	Open a spreadsheet with Excel.
2	Connect the meter to the PC via the USB interface.
3	Switch on the meter.
4	In the spreadsheet, highlight the cell where the data should be inserted. Starting from this cell, the data table will be inserted downwards and to the right.
5	In the tool bar, click the button, <i>Import data</i> . After a short search the WTW MultiLab® Importer program displays the detected meter in the transmission window: The WTW MultiLab® Importer is ready for data import.



6	Start outputting the desired measured values to the USB interface on the meter. The required operating steps on the meter are given in the meter operating manual. After the data output is started, the data are transferred to the Excel sheet. Measurement datasets are entered as a table with corresponding column headings. Calibration data are entered as a text field above the table. The transmission window remains open after the data transfer is finished.
---	--



- 7 Transmit more data or close the transmission window with the *Cancel* button as required.

**Note:**

If the transmission window is open and a table with measurement datasets already exists, the new measurement datasets are appended. If you want to import the new measurement datasets to another location with new column headings, you have to close the transmission window and highlight the new import position (see step 4).

**Dataset counter**

The dataset counter in the transmission window is increased by 1 with each received measurement dataset.

**Canceling the running data transmission**

You can cancel a running data transmission process (dataset counter increasing):

- On the meter (see operating manual). The window stays open.
- With the *Cancel* button. The transmission window is closed.





## **Wissenschaftlich-Technische Werkstätten GmbH**

Dr.-Karl-Slevogt-Straße 1  
D-82362 Weilheim

Germany

Tel: +49 (0) 881 183-0  
+49 (0) 881 183-100  
Fax: +49 (0) 881 183-420  
E-Mail: [Info@WTW.com](mailto:Info@WTW.com)  
Internet: <http://www.WTW.com>