

DIRECT READING (USING AN INTERFACE)

HOW TO CONNECT COMPUTER, INTERFACE AND METER



HOW TO READ THE WATER METER

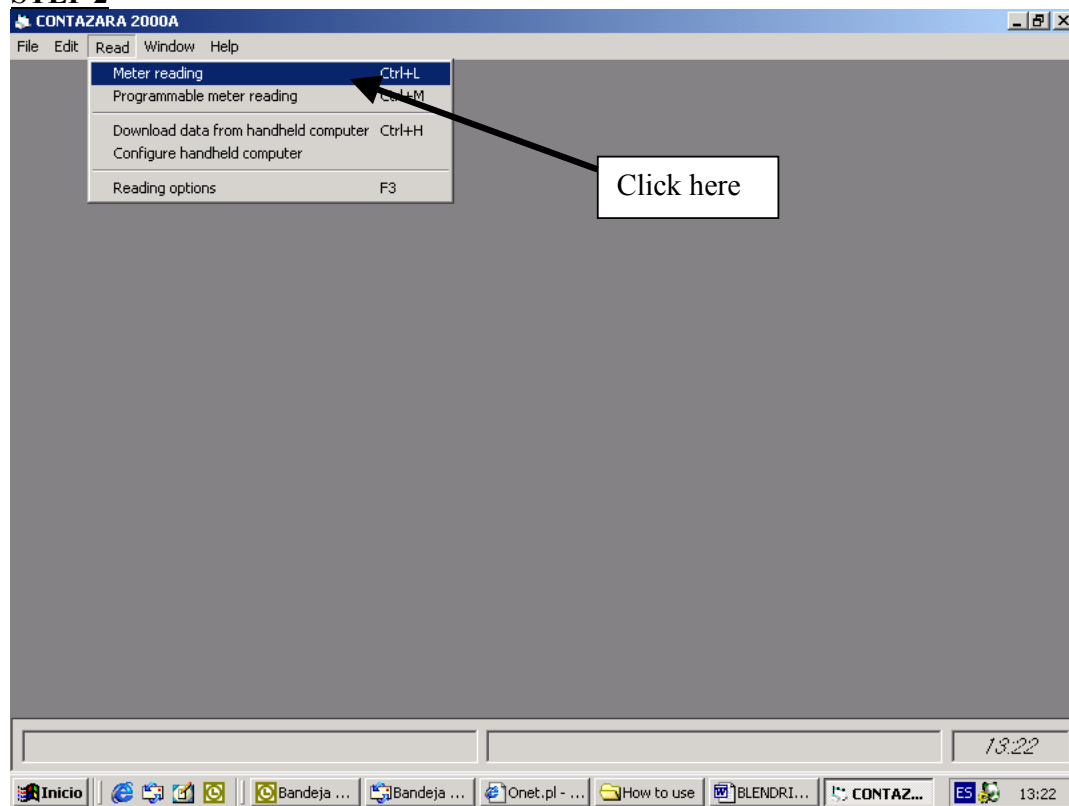
STEP 1

To open the meter reading software double click on the icon:

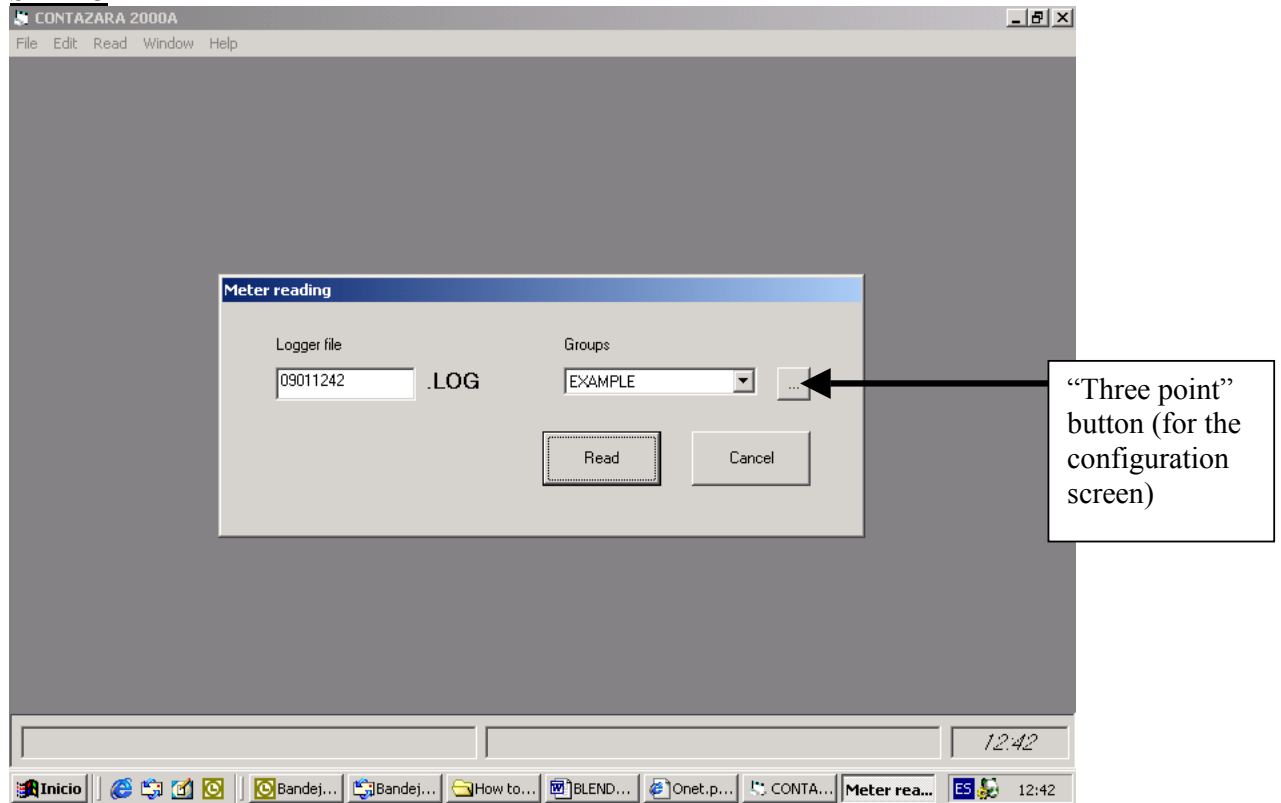


CONTAZARA 2000A.LNK

STEP 2



STEP 3



To read/configure the water meter double click on the “three point” button.

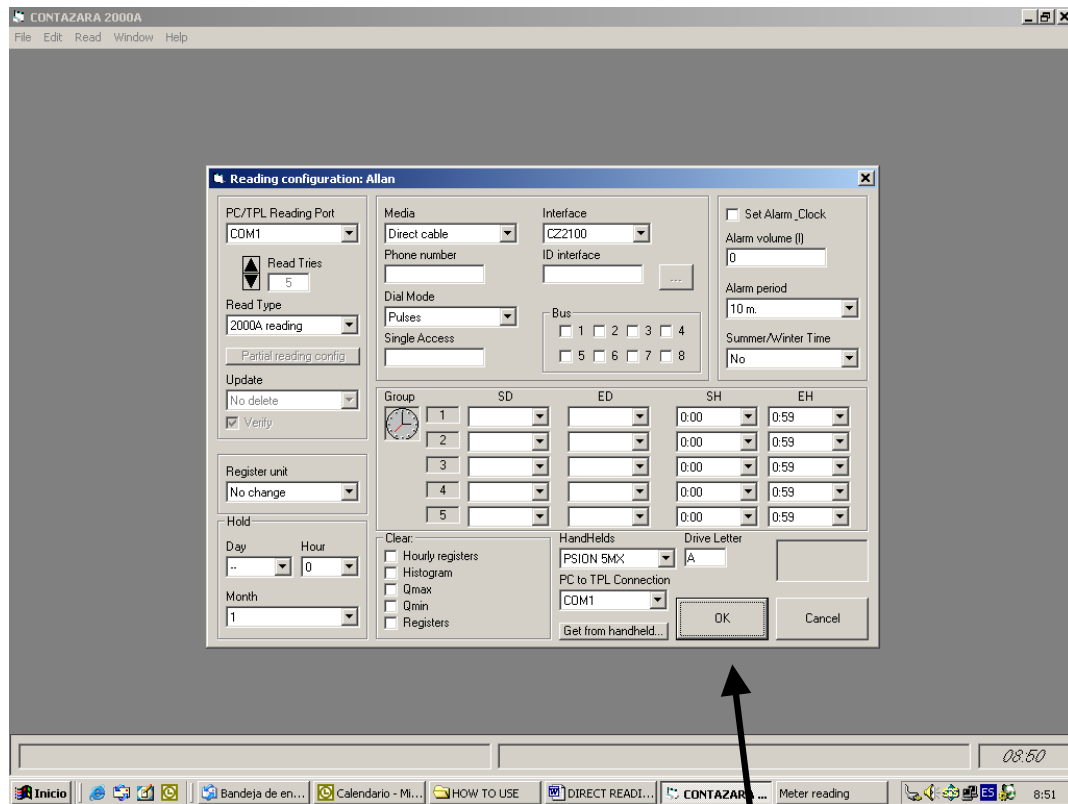
STEP 4

Now choose, how you would like to have your metering.

In case of reading your water meters directly from the RS232 Module, set the screen to the following settings:

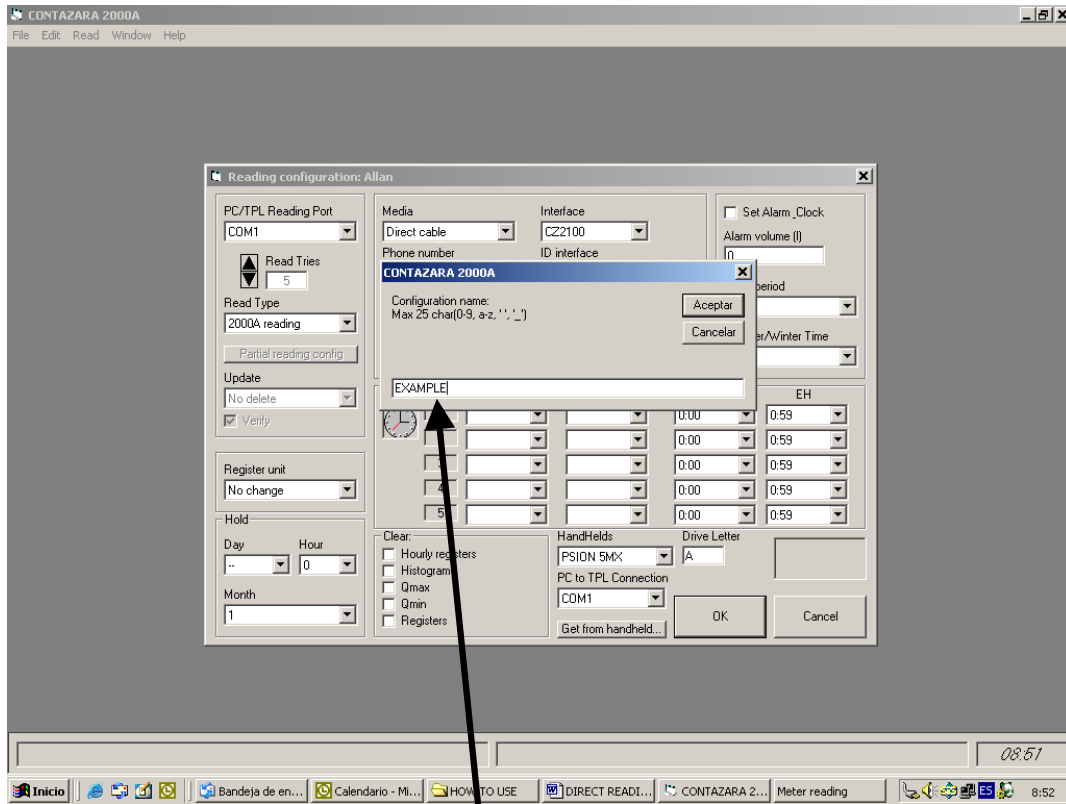
PC/TPL Reading Port	Choose COM1
Media	Choose DIRECT CABLE
Interface	Choose CZ2100
Read Type	2000a reading (maximum information)

And the rest as desired to meet your needs...



PRESS "OK"

STEP 5



Write a configuration name

Press "Aceptar".