



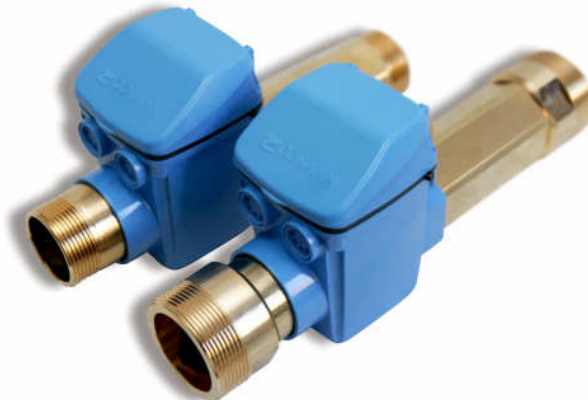
EQUIPMENT OF MANAGEMENT AND MEASURE CZ3000

- EQUIPMENT OF MANAGEMENT AND MEASURE (15 to 40 mm.) :

SERIE CZ3000.

FUNCIONAL DESCRIPTION:

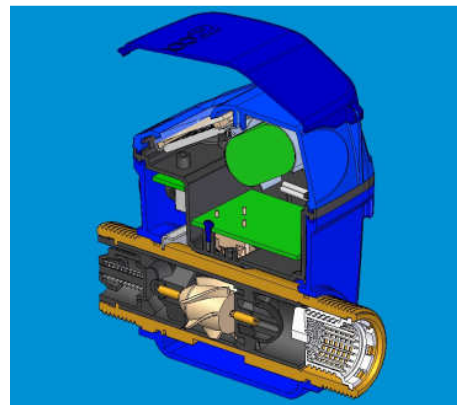
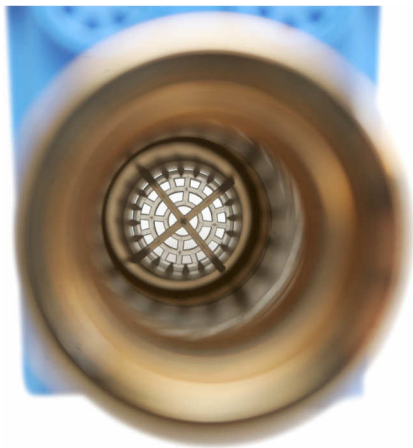
CZ3000 is born as logical evolution of the CZ2000A equipments, in a new advance toward more intelligent and more precise equipment of management A team of revolutionizing the management of the water is born taking advantage of the progress of the electronics and the new technologies.



The serie CZ3000 includes water meters of 13/15, 20, 30 and 40mm. , A tool of management and measure has been created with materials of the latest generation, through years of development and an extensive knowledge of the needs of the market

PRECISION:

The precision is basic in every equipment of measure, for that reason has worked itself in a conception of detection of the flow of water without gears or other pieces that can suffer wear . Obtaining a capable team of an extreme precision even to very low volumes. The design of axial turbine is oriented to flow of water, supported in some cases of zephyr on a tungsten carbide axis, permits a clean turn, without grazing and a total elimination of effects of sub metering , by effect of the time and by constant blows of ram.



According to the new metrological norm the equipment of management and measurement CZ3000....

RATIO Q3/Q1	MODELO	Q1(l/h)	Q2(l/h)	Q3(m³/h)	Q4(m³/h)
200	CZ3000 15mm	12.5	20	2.5	3.125
200	CZ3000 20mm	20	32	4	5
200	CZ3000 32mm	50	80	10	12.5
200	CZ3000 40mm	80	128	16	20

The turbine is located within a cartridge of anti-deposition material that together with the completely straight tube without turns avoids all type of calk incrustations. There is no element that unifies the humid part of the equipment (Tube and turbine) and the dry part. This communication between the two parts of the equipment takes place through sensors that interpret the signal of turn of the turbine. CZ3000 model has one or two sensors of signal based on the necessities of the client. The equipment can count and discount the water flow. The equipment will have two sensors. In case that an anti-return valve is required the equipment will have a single sensor.

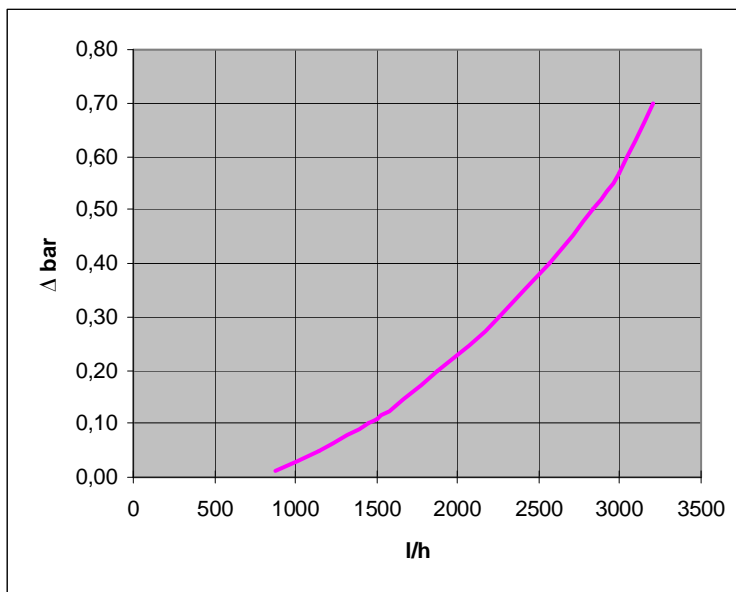
For that reason the equipment will be named in two ways: CZ3000s or CZ3000d.

This denomination s or d after the water meter code has the following interpretation:
 s: The water meter measures in normal direction and prevents the inverse flow by means of an anti-return valve.
 d: The water meter measures in normal direction and discounts with inverse flow.

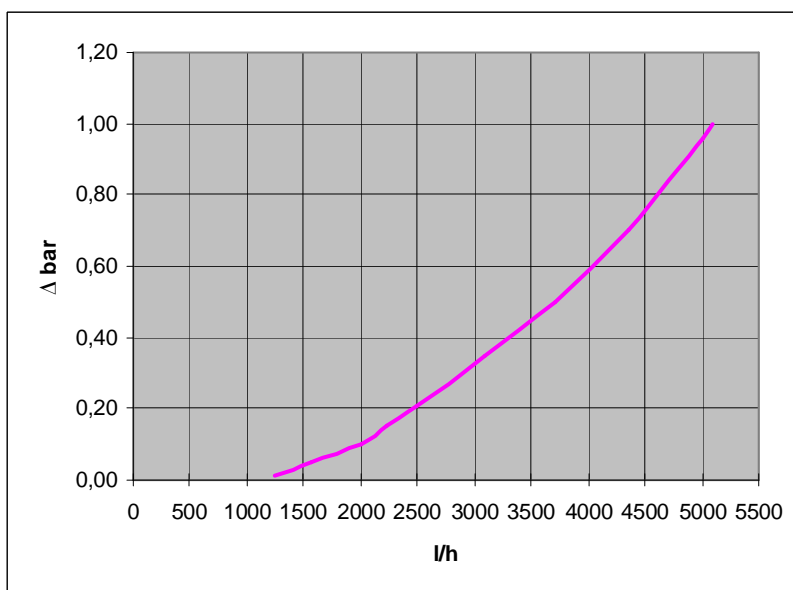
d: The water meter measures in normal direction and discounts with inverse flow.

These water meters retains their qualities throughout all their life, maintaining their metrological class. The leak is far below to the demanded one by the norm.

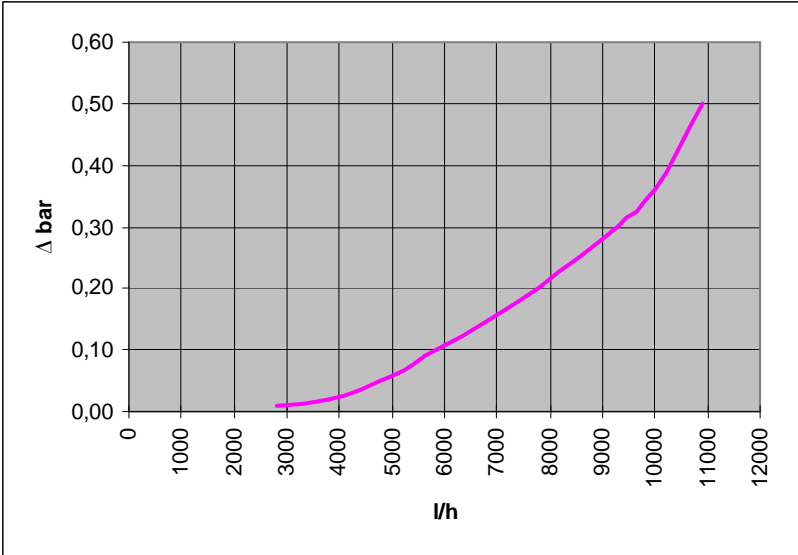
Leak Model CZ3000-3M. 13/15mm



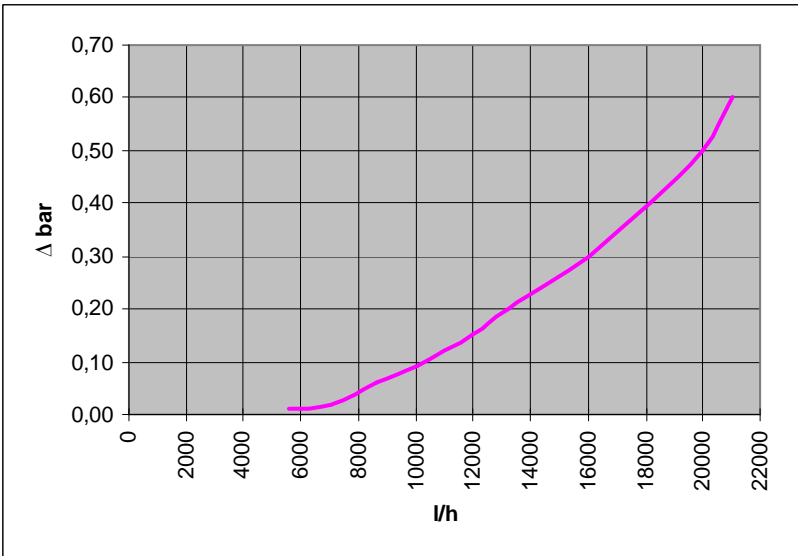
Leak Model CZ3000-5M. 20mm.



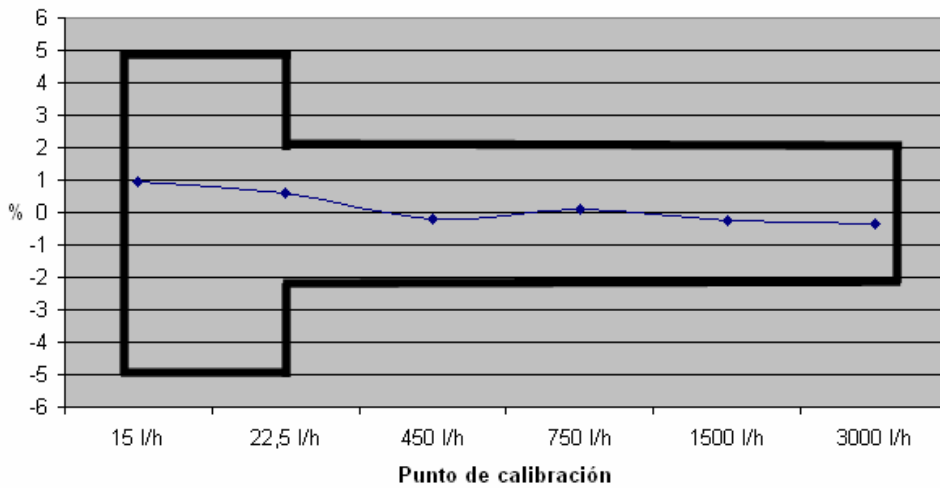
Leak Model CZ3000-10M. 30mm.



Leak Model CZ3000-20M. 40mm.



CZ3000 model has an electronic microprocessor that confers a series of oddities. One of them is the one to allow an adaptation exactly to an individual metrological curve, that is to say, to be able to correct point by point each one of the values of a curve to size, assuring precisions and to values below Q_{min} .



The design of a smooth and completely watertight tube, eliminating air seals, and any element of transmission between dry and humid parts, causes that the low temperature resistance is total and that high pressures of work do not affect their normal operation. The design of a turbine on an axis aligned with the flow of the water allows the water meter to install it in any position, maintaining in anyone of them its metrological class.